

Shilpan DIVA



@ MOTA MAVa

Enlighten your lifestyle

Shilpan **DIVA**

Shilpan Group introduces you with a project entitled as "Shilpan Diva" with a prime motive of enlightening your lifestyle just like DIVA.

This residence is filled with almost everything that completes the definition of luxury. With a thoughtful spacious planning and lucrative elevation, DIVA also has all the amazing amenities like banquet hall, indoor games, gym, garden, party lawn, etc along with a class-apart convenience of prime location.

So, Shilpan Group welcomes you warmly to be part of our strongly developed community.

@ MOTA MAVA

3
BHK





Situated in the most developing area MOTA MOVA, Shilpan DIVA is connected with some of the major roads like new 150' Ring Road, Kalavad Road and Fild Marshall Road which provides an easy connectivity with almost each and every spheres of daily necessity and work routine along with an easy access to modern-day city..!!

Near Cosmo Plus, 2nd Ring road, Mota Mava-Rajkot

Shilpan **DIVA**

Perfectly planned contemporary architecture offering large space between towers for vital ventilation along with comfort and luxury

3
BHK



Excellent connectivity to the modern-day city rightly ensure a smooth life





Grab the freshness of lush green open space



Elegantly large entry to warmly welcome you



Perfect place for all your long leisure walks

Shilpan DIVA

Dazzling ambience promising a vibrant and enlightened lifestyle





Shilpan **DIVA**

COMMON AMENITIES



Wide Entry Gate



Security Cabin



CCTV Camera



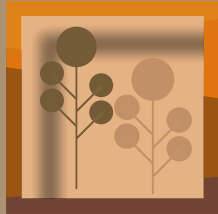
Banquet Hall



Indoor Games



Gymnasium



Landscape Garden



Society Office



Senior Citizen



Car Parking



Bike Parking



Wide Roof (Gazebo)







Shilpan **DIVA**



S P E C I F I C A T I O N


- Vitrified tiles in all floor
- Anti-skid flooring in washyard
- Kitchen Platform with S.S. sink and designer wall tiles
- Provision for chimney and RO filter in kitchen
- Supreme branded quality sanitary wares & bath fittings
- Solar water supply in all bathrooms & provision for gas geyser in washyard
- Fire retardant copper wiring with modular switches & safety gear
- Aluminum powder coated window with child safety grill & provision for mosquito net
- Decorative main door and other plain flush doors with lock fittings
- White wall putty finish in internal walls
- Sand faced plaster with acrylic paint for external walls

C O M M O N A M E N I T I E S

- 1 allotted car parking for each flat
- CCTV surveillance in ground area
- Grand entrance gate with security cabin
- Gym. Indoor games, Multi purpose Room & Society Office
- Elegant entrance foyer and spacious lift lobby
- Auto door elevators
- Generator back-up for all common facilities
- Gazebo for senior citizens
- Open green landscaped area with sit-out
- Rain water harvesting, LED lightings for green building concept



Developers
SAVYA DEVELOPERS LLP

 **96246 44441**

| w : www.shilpan.in | e : info@shilpan.in |  [shilpanbuilders](https://www.facebook.com/shilpanbuilders) |

Architect
Pratik Dadhania

Consultant Er.
Satish Mehta

Structural Er.
Ashwin Lodhiya

Legal Advisor
Kunal Hansalia

DISCLAIMER

Stamp Duty & Registration charges would be charged extra ■ GST and any such additional taxes would be charged extra ■ Maintenance deposit would be charged extra ■ Internal and external changes would not be permitted ■ Terrace rights would rest with Developers ■ Gas, PGVCL & Water connection charges would be extra.

Note

This brochure is for information purpose only. All the dimension, architectural views and photographs are for reference only.
This brochure does not form a part of the agreement or any legal document.
The printed images are the artistic impression.